

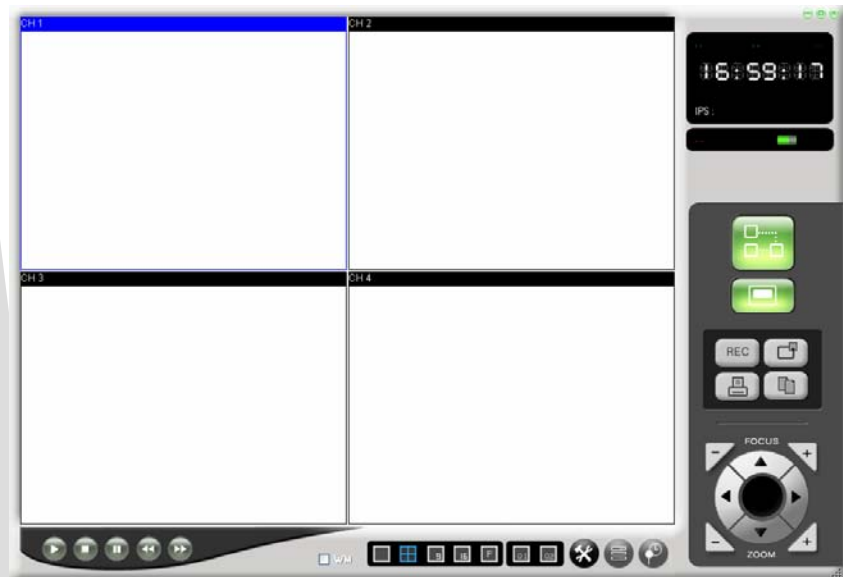
SC21FD3044-161

Instruction Manual

English Version 2.0

THE NETVIEWER SOFTWARE APPLICATION

for SC21FD3044 Network Installation



SENTINEL
CCTV

CONTENTS

1	Introduction.....	2
1.1	Netviewer Software Installation Requirements	2
2	Install the Netviewer Application in your Computer.....	3
3	The Netviewer Main Screen	6
4	Configure the Netviewer for Network Viewing.....	7
4.1	Network Configuration	7
4.2	Viewing the Cameras	8
5	Netviewer Configuration	9
5.1	Netviewer Panel Description	9
5.2	Record Video Images Using the Netviewer	11
5.3	Change the Password for the Admin User ID or Guest	15
5.4	Remote DVR/Monitor Settings	16
5.5	HDD Settings for the DVR/Monitor	16
5.6	Setting the Priority Level for the DVR/Monitor	17
6	APPENDIX A.....	18
6.1	Port Forwarding the Router	18
6.2	Register for the DDNS Service	18

1 Introduction

This manual describes the functionality of the Netviewer application software which is used to access the DVR/Monitor from your computer over a local or remote network.

When installed on your computer, the Netviewer can perform the following functions:

- View live images from the DVR/Monitor
- Store, search, and review recorded video from the DVR/Monitor 's HDD
- Change the date/time, record settings and properties

NOTE Before you are ready to view images from your computer, you need to have your DVR/Monitor connected to your the LAN with the supplied Ethernet data cable (Standard RJ-45).

1.1 NetViewer Software Installation Requirements

Minimum System Requirements:

Operating System: Windows 2000
Windows XP Home Edition / Windows XP Professional

Processor: Pentium 4 – 1.5 GHz Processor (or equivalent)

Memory: 256MB RAM

Hard Drive: 50 MB Installation space

* Additional Hard Drive space required for recording. Recorded file size will vary depending on recording quality settings

Recommended System Requirements:

Operating System: Windows XP Home Edition
Windows XP Professional

Processor: Pentium 4 – 3 GHz Processor (or equivalent)

Memory: 1024 MB RAM

Hard Drive: 50 MB Installation space

* Additional Hard Drive space required for recording. Recorded file size will vary depending on recording quality settings

2 Install the Netviewer Application in your Computer

Follow these steps to install the Netviewer application from the supplied CD.

- 1 Exit all applications currently running in the selected computer.
- 2 Insert the supplied Network Video Security Application software CD into the CD ROM drive.

The CD automatically starts when the CD is inserted and opens to the first menu screen (see Figure 1) when the CD is inserted.



Figure 1: Network Video Security Menu Screen

- 3 Click on the NETVIEWER button on the first menu screen to install the Netviewer application.

The self running installation for the Netviewer application automatically starts when the NETVIEWER button is pressed.

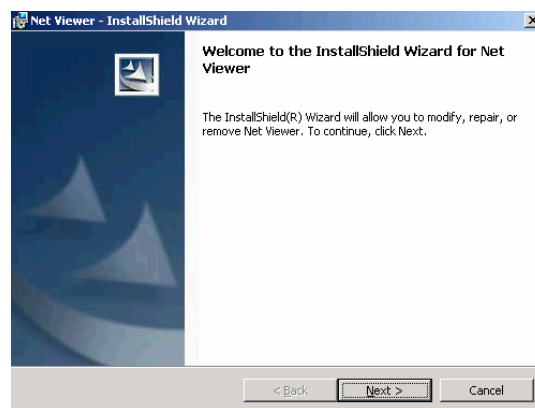


Figure 2: Startup Screen

- 4 To start the installation, press **Next**.

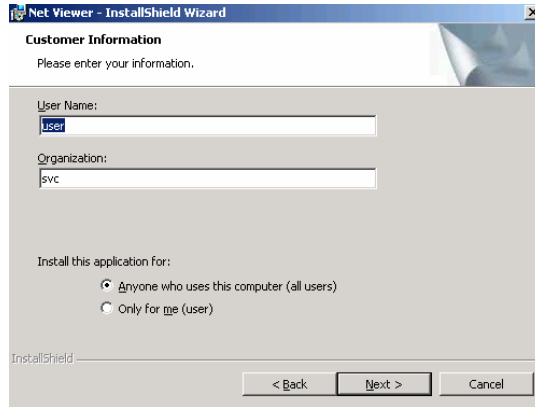


Figure 3: Customer Information

- 5 Enter your name and organization then press **Next**.

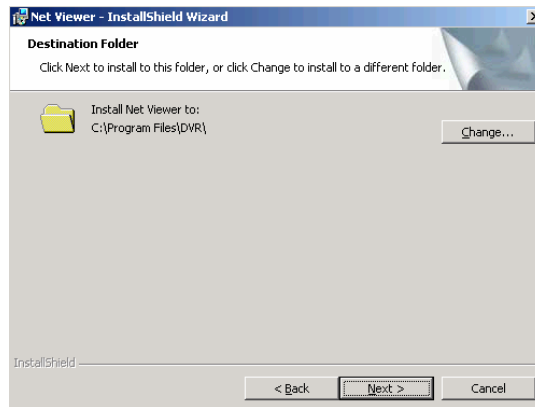


Figure 4: Destination Folder

- 6 Enter the desired folder for the installation, or press **Next**.

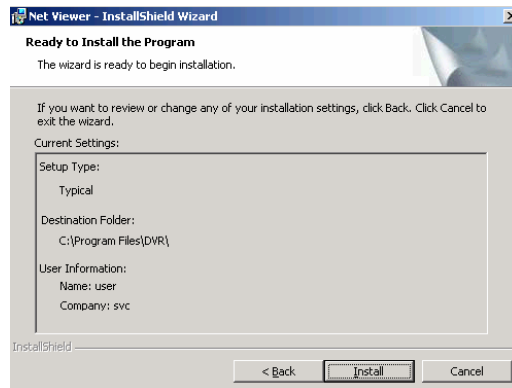


Figure 5: Installation

- 7 Press Install to start installing the program.

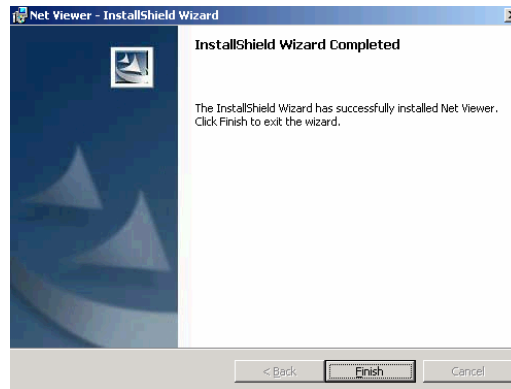



Figure 6: Installation Complete

- 8 Press the Finish button to end the installation process.



- 9 Find the **Netviewer** icon , located on your desktop (the installation process will put 2 icons on your desktop), and click on it to run the program.
- 10 The **NetViewer** main window will appear on the screen as shown below.

3 The Netviewer Main Screen

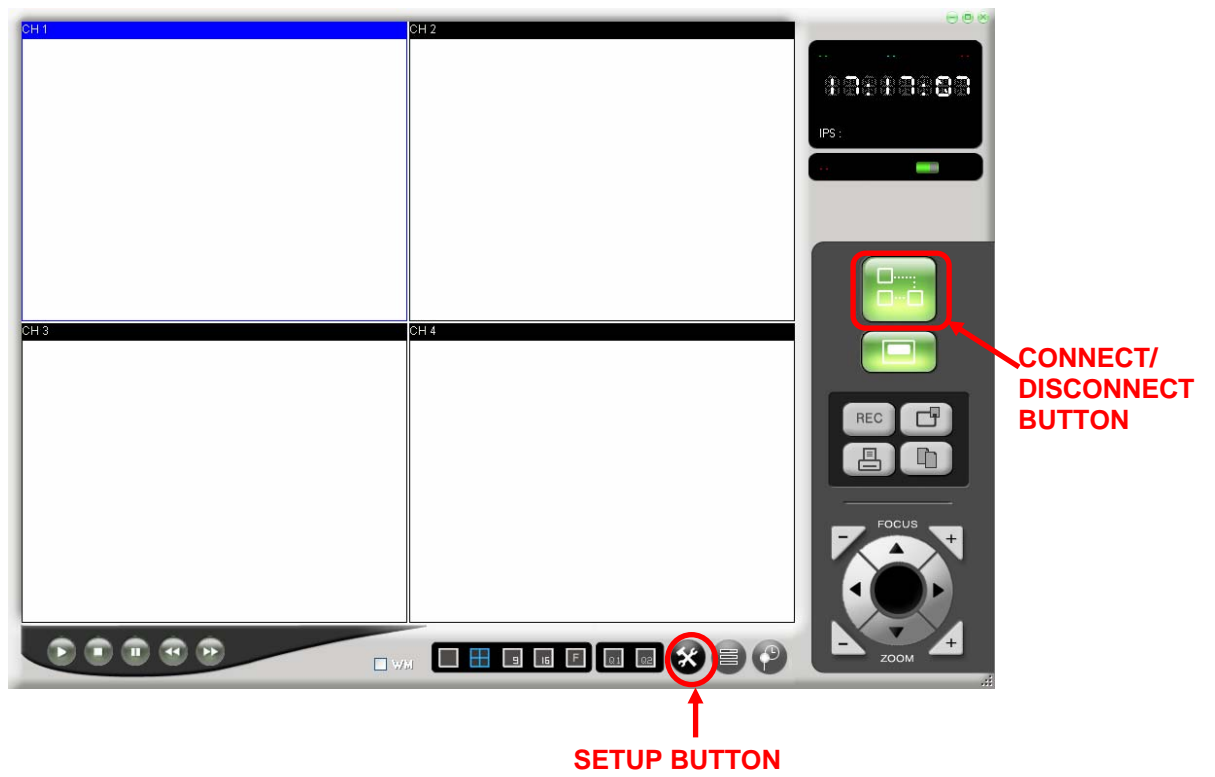


Figure 7: The Netviewer Main Screen

4 Configure the Netviewer for Network Viewing

The Netviewer allows you to access your DVR/Monitor from a computer in a networking environment:

- Local Network Operation (Connected to a Computer on the Local Network)
- Remote Network Operation (Connected to a Computer using the internet)

To access the DVR/Monitor from a local or remote network requires you to configure your Netviewer application:

- NETWORK CONFIGURATION (Page 7)
- VIEWING THE CAMERAS (Page 8)

4.1 Network Configuration

PROCEDURE

- 1 Click on the Setup icon , a SETUP window will appear.



The screenshot shows a 'Setup' window with a blue title bar and a close button. It has four tabs: 'Login', 'REC', 'DVR', and 'Priority'. The 'Login' tab is selected. The form contains the following fields and controls:

- IP/URL:** A text box containing '192.168.1.5'.
- Port:** A text box containing '5000'.
- ID:** A text box containing 'admin'.
- VIDEO:** A dropdown menu with 'NTSC' selected.
- Change Password:** A button with two sub-buttons labeled 'admin' and 'guest'.
- Buttons:** 'OK' and 'Cancel' buttons at the bottom.

Enter the DVR/Monitor IP address (i.e. 192.168.1.5)

Enter the DVR/Monitor Port (i.e. 5000)

Set the User ID (i.e. admin, Max. 5 digit)

Set the video format (NTSC/PAL).

If you are logged on as Admin User, set the ID and Password for Admin User and the password for the Guest.

- 2 Enter the setup information under the Login tab in the window to setup the cameras for viewing.

a) **IP**

Local Network Viewing only: The **IP** entry is the IP Address of the DVR/Monitor. The IP Address of the DVR/Monitor is available by pressing the "ENTER" key on the remote control

Remote Network Viewing only: The **IP** entry is the Domain Name provided when you register with the DDNS service (See APPENDIX A, page 18).


NOTE If your DVR/Monitor is on a network behind a router then you need to forward your router ports. If you set the port number to 5000 (the default) you need to forward 4 serial ports from the set port number (i.e.:5000, 5001, 5002, and 5003). See APPENDIX A, page 18.

- b) **Port:** The DVR/Monitor port entry is 5000 (by default) for Local and Remote Network viewing.
- c) **ID:** The **User ID** entry is **admin** by default and cannot exceed a maximum of 5 characters, lowercase.
- d) **VIDEO:** Choose the NTSC format (North America).

3 Press OK to continue.

4.2 Viewing the Cameras

PROCEDURE

- 1 Click on the connect icon  to connect to the DVR/Monitor for Network Viewing.
- 2 Enter the User ID and password. Note each cannot exceed 5 characters, lower case. The default User ID is **admin**. The default password is **admin**.

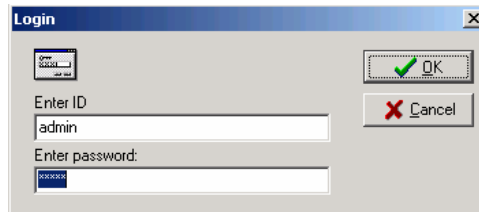


Figure 8: Login Screen

- 3 Press OK

If the setup is properly done, the cameras will appear on the screen (see Figure 9, page 8).



Figure 9: Remote Camera Views

NOTE If your DVR/Monitor is behind a router, you need to open 4 ports on the router, related to the main port.

For example: If you set up port 5000 on the Netviewer you need to open ports 5000, 5001, 5002 and 5003 in the router in order to connect remotely over the internet.

5 Netviewer Configuration

5.1 Netviewer Panel Description

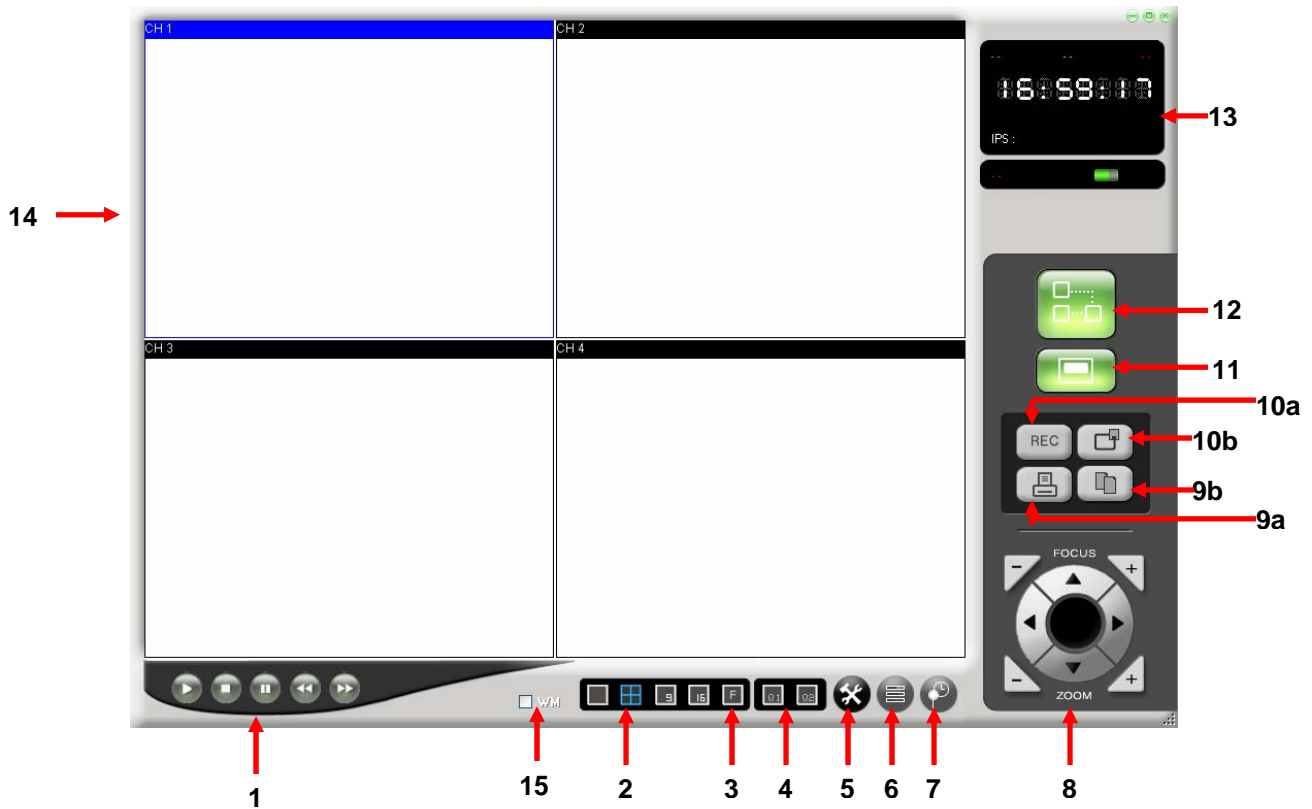
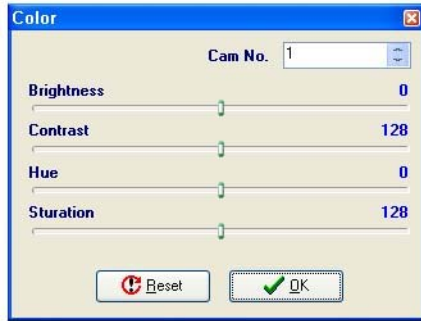


Figure 10: Netviewer Panel

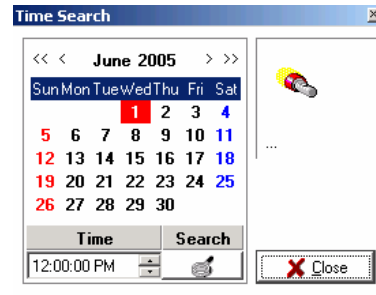
- 1 These controls are used to “PLAY, STOP, PAUSE, REW and FF” the recordings saved on the HDD of the DVR/Monitor
When the PLAY button is pressed the most recent recorded data will be played regardless of the search data set on the DVR/Monitor.
- 2 Select the display mode.
Available display modes are QUAD, FULL, PIP, POP. You can change the channel with the right button of the mouse on each mode.
- 3 Change the NETVIEWER image screen to Full Screen Mode.
NOTE: To exit from Full Screen Mode, simply press the ESC button on the Computer’s Keyboard.
- 4 This button is used to change the page when you are using the 2 PAGE 8 CHANNEL DVR.
- 5 The Setup button is used to set the appropriate values for the NETVIEWER.
- 6 Set the Brightness/Contrast/Hue/Saturation of each channel with this button.



- ← Choose the channel.
- ← Set the Brightness Value.
- ← Set the Contrast Value.
- ← Set the Hue Value.
- ← Set the Saturation Value.

7 TIME SEARCH. This feature allows you to Search events on your DVR/Monitor .

- a) Press the Search button, the window shown below will open.
- b) Select the desired date and time then press the Search button.




The DVR will start searching the data. If the data is found, it will be played automatically. If there is no data available for the specified date and time a "DATA NOT FOUND" message will be displayed.


- 8 Adjust the PAN/TILT of the camera (PTZ cameras only).
- 9
 - a. Print the displayed image.
 - b. Capture the displayed image of the Netviewer in JPEG file format
- 10
 - a. Starts / Stops recording the streaming video viewed over the network on to the computer's hard drive.
 - b. Starts / Stop recording on the DVR/Monitor's hard drive.
- 11 Local Player button: Press this button to open the Local Viewer (Player) window to play your video recordings saved as a file on your computer. The files are saved with a .DVR extension after the filename to show the file is a recorded video.
- 12 Connect/ Disconnect button (to the DVR/Monitor from the computer) to view images from the cameras connected to the DVR/Monitor.
- 13 Information Display Screen
 - Displays the status of DVR/Monitor (NORMAL / ALARM / MOTION / SCHEDULE REC).
 - Indicates if the currently shown video is LIVE or PLAYBACK.
- 14 Display area for the video image.
15. WM: If the box is ticked up, the "WMK" (which is the water mark) will be displayed and saved.



NOTE The Admin User has full access. The Guest User can ONLY use the No. 5 and No. 11 buttons.

5.2 Record Video Images Using the Netviewer

Using the Netviewer software, you can initiate recording onto the DVR/Monitor's hard drive or onto the computer's hard drive where the Netviewer software is installed.

To start / stop recording video onto the DVR/Monitor's Hard Drive, press the  button (on the Netviewer application). starts or stops recording on the DVR/Monitor.



To start / stop recording video onto the computer's hard drive, press the  button.

To start / stop recording on the DVR/Monitor's Hard Drive and the Computers Hard Drive, both buttons (, ) must be pressed.

5.2.1 Rec Window

The REC window allows you to configure the video capture settings to save and capture the video of the DVR/Monitor on your computer.

PROCEDURE

- 1 Start the NETVIEWER application by clicking on the Netviewer icon 
- 2 Press the SETUP BUTTON  to open the SETUP window.
- 3 The SETUP window will come out (see Figure 11).

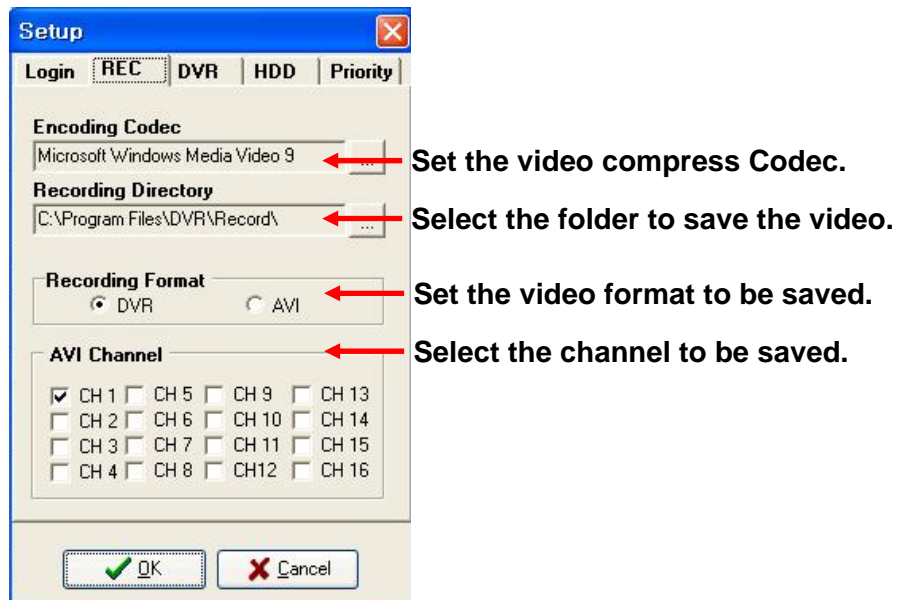


Figure 11: Netviewer Setup Window

- 4 From the SETUP window, select the REC tab and the REC window will appear. The REC window is used to set the values for saving the images displayed in the Netviewer.
- 5 Choose the video capture settings you wish to configure when saving and capturing video:

- Encoding Codec
- Recording Directory
- Recording Format
- Setting the Recording Channels

5.2.2 Encoding Codec

NOTE If you choose the Encoding Codec, you can select the relevant Codec you want to use. You could use any Codec out of the preinstalled Codec on your computer.

To view an example of the selection window, see Figure 12 (the actual display could be different depending on your computer system).

PROCEDURE

- 1 Click on the Encoding Codec button from the REC window.

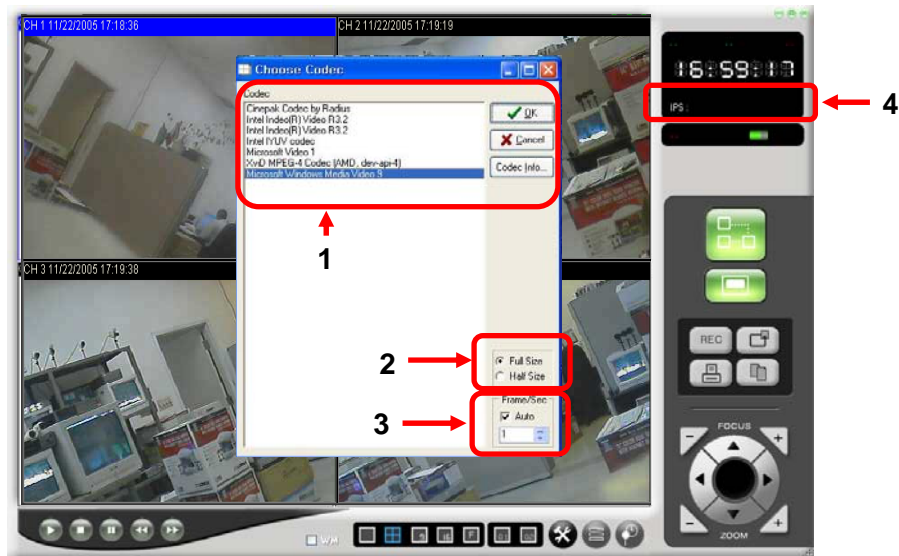


Figure 12: Codec Setting

The Codec Window opens and displays the currently available Codecs on your computer.

- 2 Choose the Codec you want to use from the available Codecs (see Figure 12, #1)
- 3 Select the image size to be saved (see Figure 12, #2)
- 4 Set the IPS value to be saved (see Figure 12, #3).

NOTE *Codecs (Microsoft Windows Media Series) is recommended in situations where a Codec is not working properly, or if saved images blink.*

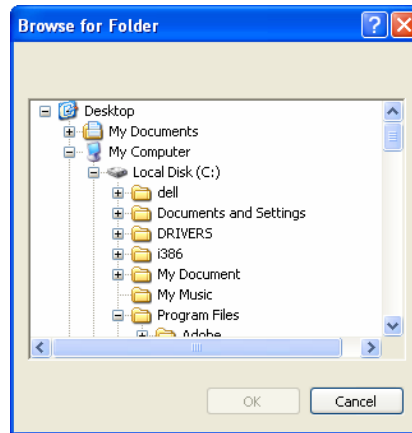
5.2.3 Recording Directory

Choose the directory (or folder) in which to save your files of recorded video.

PROCEDURE

- 1 Choose the Recording Directory button from the REC window.

A **Browse for Folder** window will open and allow you to choose the directory in which to save your file.



- 2 Choose the Folder where you wish to save your video files.

- 3 Click OK.

5.2.4 Recording Format

Use this setting to select the format of the image to be saved.

PROCEDURE

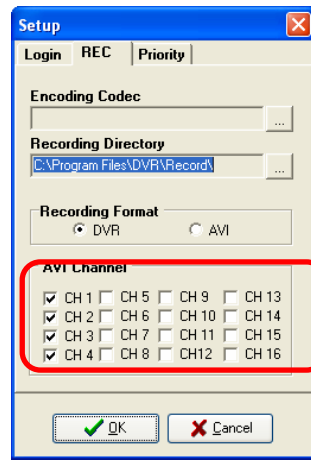
- 1 Click on the AVI or DVR circle to select the format of the image to be saved.

NOTE With the available DVR format, you can only playback with the Local Viewer. The AVI format can be played with the Windows Media player or other player.

5.2.5 Setting the Recording Channels

Use the AVI Channel setting to select the channels from which the images will to be saved.

PROCEDURE



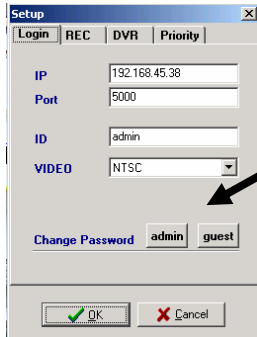
- 1 Click on the check box to select the channels from which images will be saved.

5.3 Change the Password for the Admin User ID or Guest

PROCEDURE

- 1 Click on the Setup icon to open the SETUP window.

NOTE You must be connected (as the administrator) to the DVR/Monitor to change the password.




Click on the **admin (or guest)** icon

- 2 Select the Login tab to open the Login window.
- 3 Click on the admin (guest) button to open the Change Password message window.



Change Password Window - Admin Change Password Window - Guest

- 4 Enter the following information in the Change Password window:
 - a) Your current password (default: admin)
 - b) The ID of the admin (guest) user (maximum 5 characters)
 - c) A new password for the admin (guest) user
 - d) Verify the new password

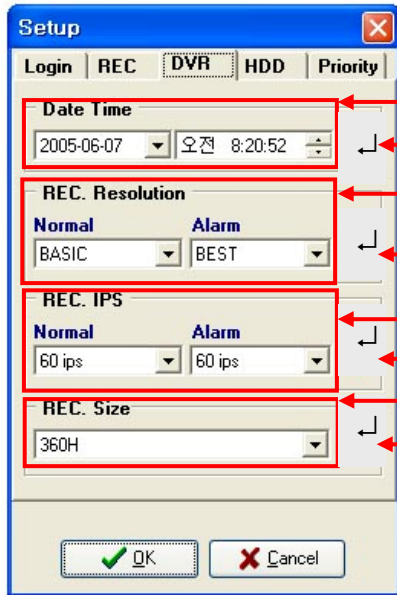
- 5 Click OK to in the change password confirmation window  to confirm the password change.

NOTE To change the guest password, repeat the procedure above by pressing the guest button instead of the admin button.

5.4 Remote DVR/Monitor Settings

The DVR window allows you to configure some DVR/Monitor settings from a remote location over your network. (i.e. if your DVR/Monitor is connected to a remote computer by the internet or is on a local network).

- 1 Click on the Setup icon (to open the SETUP window)
- 2 Select the **DVR** tab to see the DVR window.



Used to Change the DVR Setting over the Network.

Set the data and time.

Press the button to apply the changes.

Set the resolution for the Normal Rec and the Alarm Rec

Press the button to apply the changes.

Set the IPS for the Normal Rec and the Alarm

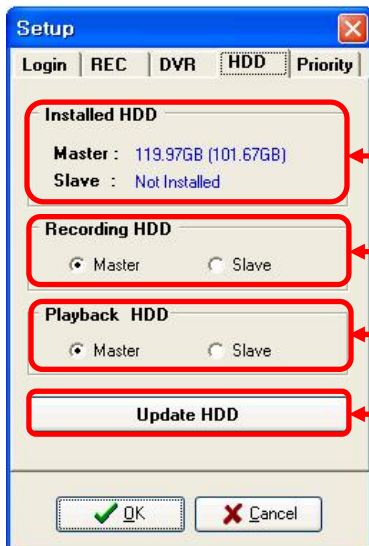
Press the button to apply the changes.

Set the Recording Resolution.

Press the button to apply the changes.

- 3 Press OK to finish.

5.5 HDD Settings for the DVR/Monitor



Show the HDD information installed on the DVR. The value is the physical capacity of each HDD, and the value in the parenthesis is the available capacity for saving.

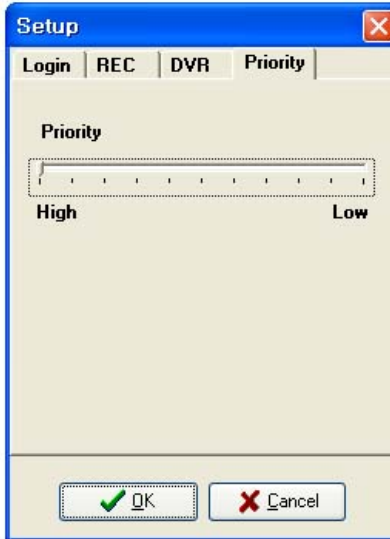
Select the HDD for Recording.

Select the HDD for Playback.

Press button to apply the changes.

5.6 Setting the Priority Level for the DVR/Monitor

Set the priority level to High for the best possible program performance. When you set the priority level to High, the Netviewer will run smoothly on your computer with multiple programs open.



NOTE If you are not logged on as an Admin User you can NOT use the DVR/Monitor Setting menu.

6 APPENDIX A

6.1 Port Forwarding the Router

If you are remotely connected to your DVR/MONITOR (i.e. the DVR/Monitor is connected to a computer using the internet) port forwarding must be enabled on your router. By default you must forward ports: 5000, 5001, 5002, and 5003 on your router if you are using the default port forward settings.

For instructions on how to port forward your router for this product choose one of the following methods.

- 1 Make sure you set up port forwarding on your router. You can change the router's settings through your local computer.
 - a) Refer to www.sentinelcctv.com/support for the latest information on port forwarding guides for routers.
 - b) OR – Refer to your router's manual for specific instructions on enabling Port Forwarding for your router type.

By default, you must forward ports: 5000, 5001, 5002, and 5003 on your router if you are using the default port forward settings. Set Port Number 5000 in the Netviewer software.

6.2 Register for the DDNS Service

NOTE You must have a live internet connection for remote access.

- 1 Enter, "ddns.strategicvista.net" in your web browser.



The screenshot shows the Strategic VistaView web interface. At the top left, there is a logo for "STRATEGIC VISTA" with a globe icon. Below the logo is a blue horizontal bar. Underneath the bar, the text "VistaView" is displayed. To the left of "VistaView" are three links: "Login", "Create Account", and "Lost Password", each preceded by a right-pointing triangle. To the right of these links are two input fields: "Username" and "Password", each with a small rectangular box next to it.

- 2 Choose "Create Account" and fill in the information.

NOTE For the Product License entry:

Product Code: **SC21FD3044** (this is the model number found on the back of the unit, or the front of the packaging)

MAC Address: use the MAC Address of the DVR/Monitor unit

URL Request: Enter your name (maximum 8 characters, lower case) and additional information

After registering for the DDNS service and creating an account you will receive an email which confirms your registration and gives you a domain name.

```
Service provider:      dns1.strategicvista.net
Domain name:          namename .strategicvista.net
User name:            namename
Password:             <leave this field blank>
Use Public IP to Register: Yes
```

- 3 Record your Domain name here:

Domain Name:

The domain name is entered in the setup window of the Netviewer software set up on a remote computer.



It's all on the web



Product Information



Specification Sheets



User Manuals



Software Upgrades



Quick Start Guides



Firmware Upgrades



VISIT

www.sentinelcctv.com

www.setinelcctv.com

Strategic Vista International Inc.